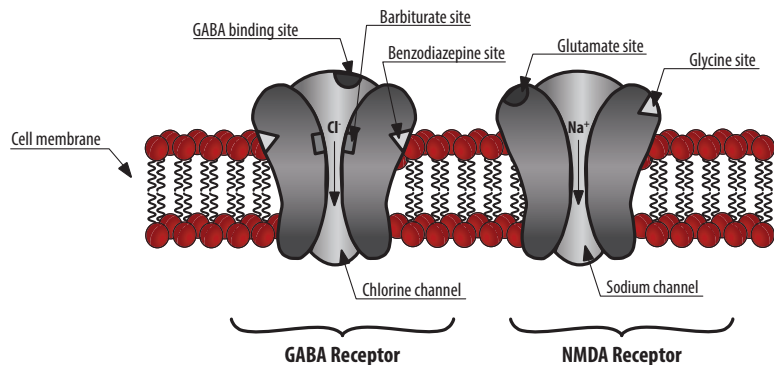
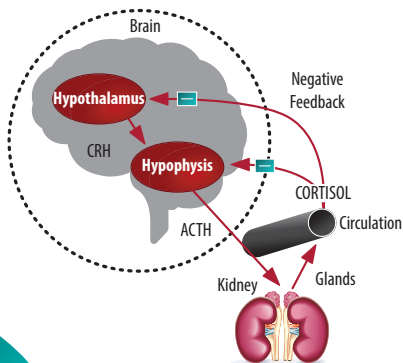
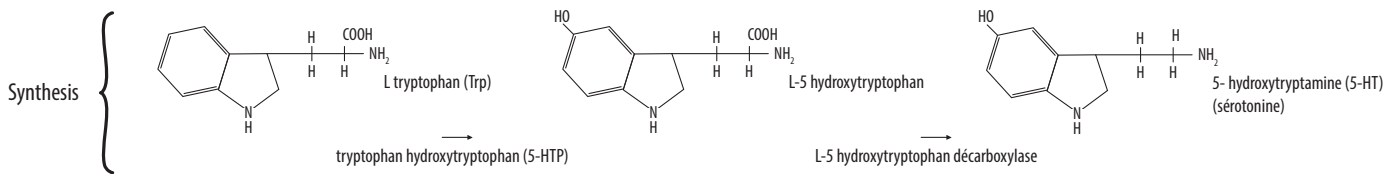


WHAT WE KNOW

- Stress can induce behavioural and/or physical problems (colic, gastric ulcers, rhabdomyolysis, immune depletion)
- The three main pathways of stress are: the hypothalamo-hypophyseal axis, serotonin synthesis and sensitivity and nervous influx modulators (GABA, Glutamate)
- Tryptophan and magnesium are well established key players in stress control
- *Angelica archangelica* extract performed similarly to anxiolytic and antidepressant drugs in an elevated T-maze and swimming test in a rat model ⁽¹⁾



⁽¹⁾ Kumar D1, Bhat ZA, Shah MY. Anti-anxiety activity of successive extracts of *Angelica archangelica* Linn. on the elevated T-maze and forced swimming tests in rats. J Tradit Chin Med. 2012 Sep;32(3):423-9.



AUDEVARD SOLUTION : ZZEN FLASH

- ✓ ***Angelica archangelica* root**
- ✓ **Technically pure tryptophan**
- ✓ **Magnesium chloride**

USES

- 1 Introduction to a new environment
- 2 Transport, clipping, shoeing
- 3 Weaning
- 4 Situations likely to induce anxiety (fireworks,...)



ZZEN FLASH

SUPPLEMENT FOR ANXIOUS AND «HOT» HORSES

■ Description

Some horses are more sensitive than others to stress caused by training, competitions, transport and changes in their environment. These situations create a one-off increase in the nutritional requirements of the horse which should be offset by additional intake of specific nutrients.

■ Purpose

Nutritional supplement to prepare horses for unusual circumstances (transport, a competition, etc.).

■ Formula

Zzen Flash is formulated with technically pure tryptophan and magnesium, which anxious horses have an increased requirement for. This apricot/peach flavoured formula also includes *Angelica archangelica*.

■ Daily allowance

Empty the contents of the syringe into the horse's mouth. One syringe 1 hour before the target time. If necessary, administer another syringe the night before.

■ Professional format

60 ml syringe- (EAN 3515654024021).

■ Content per dose

Technically pure tryptophan	10,000 mg
Magnesium chloride	23,750 mg
Root of <i>Angelica archangelica</i>	9,500 mg



BEHAVIOUR

Composition per litre

Additives (per litre):

- **2b- Aromatic substances:** Stevia extract (CoE 552) 3,000 mg.
- **3c- Amino acids:** 3.4.1 technically pure tryptophan 166,668 mg.
- **Technological enhancers:** apricot/peach flavor 5,100 mg

Raw materials:

Magnesium chloride, Propylene Glycol, root of *Angelica archangelica*.

Analytical constituents:

Humidity 50.3 %, crude protein 12.4 %, crude fats 0 %, crude ash 8.9%, magnesium 3.9%, crude fibre 0.8 %.

This product belongs to the complementary feed for horses category.